

## TRUTEK TRN - universal rubber sleeve with



### Usage:

- fixing elements exposed to vibrations
- fixing information boards and signs
- various fastening in thin substrates made of stone, glass, sheet metal, plastics, wood-based panels, etc.

### Anchor material:

The expansion sleeve is made of weather-resistant EPDM rubber and a brass sleeve with metric thread

### Substrate material:

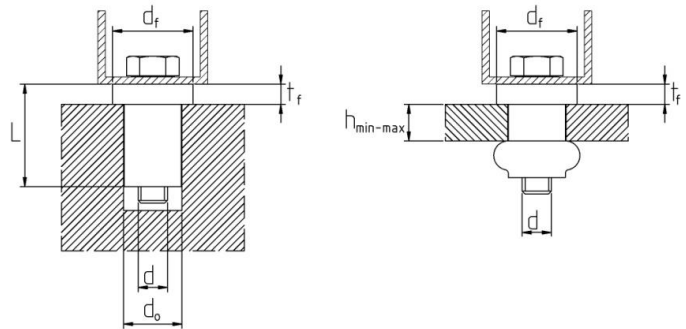
Concrete, natural stone, full ceramic brick and perforation, full silicate brick with gaps, channel plate, steel profiles, sheet metal, plastic panels, glass, wood-based panels, etc.

### Advantages:

- quick and easy assembly and disassembly
- vibration and corrosion resistant fastening
- good for thin walled and weak substrates
- fastening in closed profiles and hard to reach places
- the sleeve flange seals the connection

Way of marking the sleeve TRN

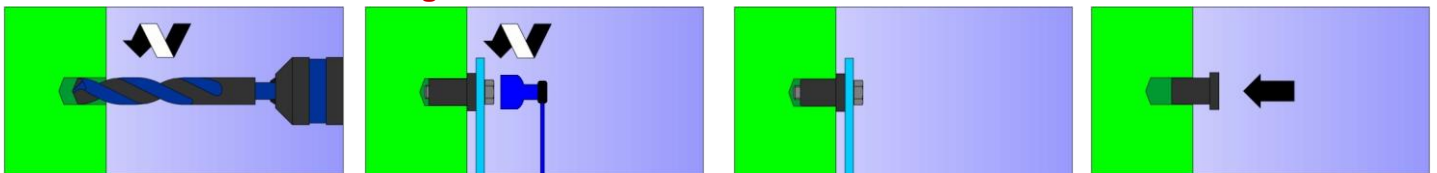
Symbol	Thread diameter d [mm]	Sleeve Length L [mm]
TRN	03	24



### Technical parameters of the sleeve TRN

Product Code	Thread Diameter	Hole Diameter in the ground	Substrate wall thickness	Sleeve Length	Collar thickness	Collar diameter
	[mm] d	[mm] d <sub>o</sub>	[mm] h <sub>min-max</sub>	[mm] L	[mm] t <sub>f</sub>	[mm] d <sub>f</sub>
TRN03240	3	8	2-15	24	1	11
TRN04100	4	8	0,4-2	10	1	11
TRN04240	4	8	2-15	24	1	11
TRN05150	5	10	0,4-4	15	1	13
TRN05250	5	10	8-16	25	1,3	14
TRN05400	5	10	20-30	40	1,3	14
TRN06150	6	13	0,4-3	15	1,3	16
TRN06250	6	13	6-12	25	2,0	16
TRN06350	6	13	12-25	35	1,3	16
TRN08250	8	16	4-10	25	5,7	22
TRN08500	8	18	25-35	50	1,6	20
TRN10550	10	20	25-35	55	1,3	22,5
TRN12750	12	24	35-45	75	1,3	27

### Installation method in solid ground:



### Installation method in substrates with empty spaces:

